

AS Spherical accumulators



► Technical description

LEDUC spherical accumulators consist of two hemispherical shells which are screwed together and which hold a diaphragm. This diaphragm has a metal stud which closes off the operation hole when the fluid is completely discharged. There is therefore no danger of damage to the diaphragm.

The gas side port is fitted with a charging valve allowing the pressure in the accumulator to be checked or changed.

Separator:

- Standard, Nitrile: from -20°C to +100°C
- Special: from -40°C to +100°C dynamic use.

► Advantages

The diaphragm only changes position, the elastomer in fact works little. The LEDUC spherical accumulator owes most of its qualities to its diaphragm and metal pin:

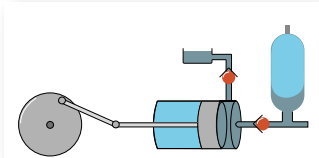
- excellent gas/fluid tightness,
- possibility of total and rapid discharge,
- can be adapted to suit a wide range of fluids handled.

► Operating fluids

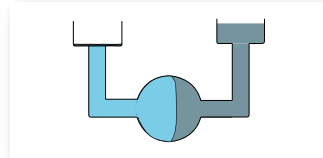
- Mineral-based hydraulic fluids: standard diaphragm.
- Corrosive or non-standard fluids: please consult our Customer Service Department.

► Examples of applications

Pulsation dampening



Transfer



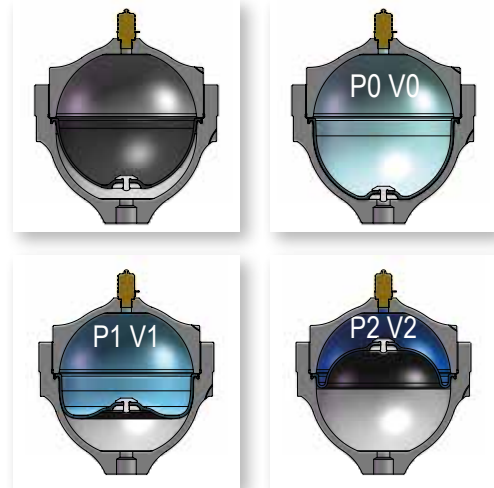
AS 400 bar

Maximum pressure: 400 bar

Extreme operating temperature:

- Standard version : -20°C to + 100°C
- Low temperature version: -40°C to + 100°C

► Deformation of the bladder-diaphragm



► Filling gas

Nitrogen only.

► Volumetric ratio(V0–V2)/V0

The volumetric ratio of this type of accumulator is 0.75.

For example: an AS 1 accumulator can take in a maximum volume of 0.75 V0 = 0.75 x 1 = 0.75 litres.

► Protection

On request, ARCOR® anti-corrosion treatment.

► Order code

Capacity and code	Protection	Type of diaphragm	Charging valve	Control	Charging pressure
AS 0.5 060972	S	E/1	310367	D	Specify (in bar)

S: without protection P: ARCOR® anti-corrosion treatment	E/1 or E/2 or E/3 or E/4 or E/5	310367: P1620 310527: P1620 Stainless steel 067210: SCHRADER	S: without control D: CE approval
---	---	--	--------------------------------------

E/1: NBR (nitrile)

Specific diaphragms available on request, minimum order quantity may apply; please consult us.

E/2: NBR (nitrile stainless steel insert)

available on special order:

E/3: ECO (epichlorhydrine)

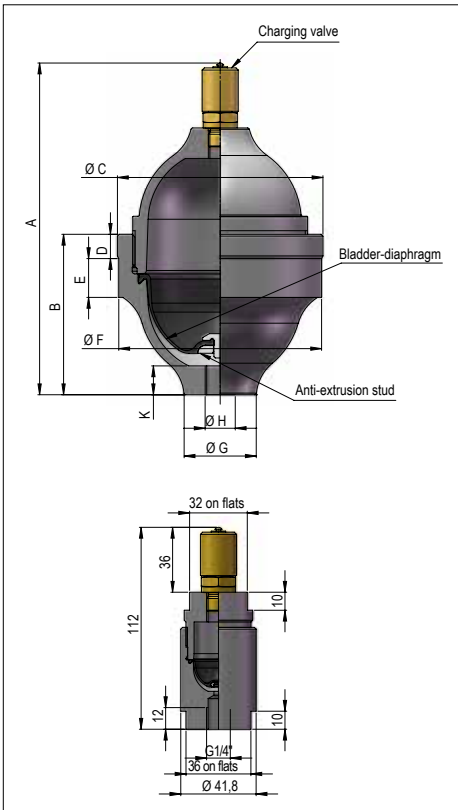
E/4: EPM (epr)

E/5: FKM (viton®)



AS Characteristics, dimensions and accessories

CHARACTERISTICS AND DIMENSIONS



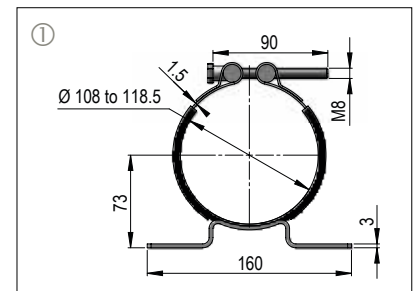
AS	LEDUC code	Nitrogen capacity Vo litres	Max. pressure (bar)	Weight (kg)	Dimensions (mm)								
					A	B	Ø C	D	E	Ø F	Ø G	Ø H	K
AS 00 20	060932	0.19	400	1.2	150	69	84.5	9	20	83.5	29	G1/4"	12
AS 00 50	060972	0.45	400	2.8	184	89	114	12	23	112.5	40	G3/8"	16
AS 00 70	060782	0.65	250	3	197	89	119.5	9	24	118.5	30	G3/8"	13
AS 01 00	060110	1.1	400	5.5	197	112	163.5	50.5	50.5	163.5	40	M18 x 1.5	12
AS 02 50	060812	2.55	400	14	251	161	213.5	37	29	210	51	G3/4"	17
AS 04 00	060121	4.1	400	22	298	202	251	44	40	247	105	M33 x 2	20
AS 10 00	060141	10.19	400	53	391	268	339	52.5	52.5	333	105.1	M33 x 2	20
AC 00 02	060955	0.017	400	0.640	see drawing								

HYDRO LEDUC provides after sales service, supplies spare parts and can requalify your accumulators (retesting).

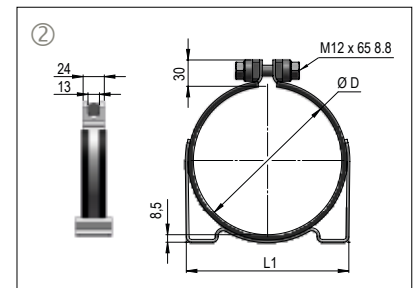
ACCESSORIES

► Fixation clamps ① and ②

Volume (L)	Characteristics	LEDUC code
0.5 - 0.7	Zinc-plated steel	254021
	Zinc-plated steel quick-tightening	254031
	Stainless steel	254032



Volume (L)	Dimensions			Characteristics	LEDUC code
	Ø D	L1	L2		
1	168	184	148	Zinc-plated steel	254022
2.5	210	254	212	Zinc-plated steel	254006
4	247	300	248	Zinc-plated steel	254005



► Adaptors ③

Volume (L)	Dimensions		Characteristics	LEDUC code
	A	B		
1	M18 x 1.5	G1/2"	Steel	EC1054
2.5	G3/4"	G1/2"	Steel	066451
4 - 10	M33 x 2	G3/4"	Steel	EC1061
4 - 10	M33 x 2	G3/8"	Steel	EC1058
4 - 10	M33 x 2	G1/2"	Steel	EC1059

