

ABVE Bladder accumulators



► Technical description

The ABVE bottle type accumulators consist of:

- a forged steel body,
- a bladder,
- a charging valve,
- an oil side orifice fitted with a poppet valve which prevents extrusion of the bladder, and an air bleed screw used during system start-up.

► Advantages

Bladder accumulator component parts are interchangeable with those of major accumulators available.

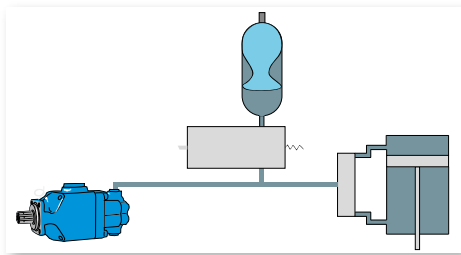
Dimensions allow for easy installation and also use in batteries.

► Operating fluids

- Mineral-based hydraulic fluids: standard bladder.
- Non-standard and/or corrosive fluids: please consult our Customer Service Department.

► Examples of applications

Energy storage



ABVE 330 bar

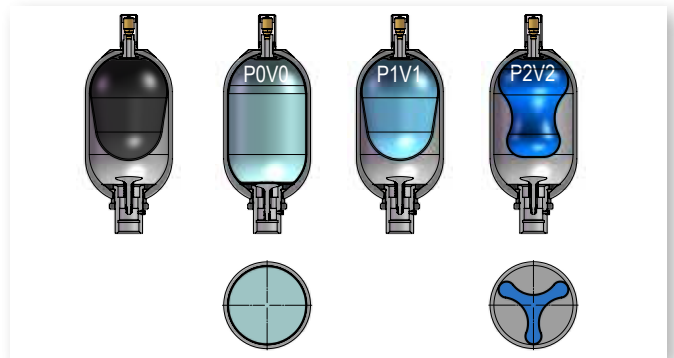
Maximum pressure: 330 bar

ABVE 4 maximum pressure: 350 bar

Extreme operating temperature:

- Standard version: -20°C to +80°C

► Deformation of the bladder



► Filling gas

Nitrogen only.

► Volumetric ratio (V0–V2)/V0

The volumetric ratio of this type of accumulator is 0.75.

For example, an ABVE 4 accumulator can take in a maximum volume of $0.75 V_0 = 0.75 \times 4 = 3$ litres.

► Order code

Capacity and code	Type of diaphragm	Charging valve	Control	Charging pressure
ABVE 10 066860	E/1	310379	D	Specify (in bar)
Either E/1 or E/3		310379: P1620 310308: V15N	D: CE approval	

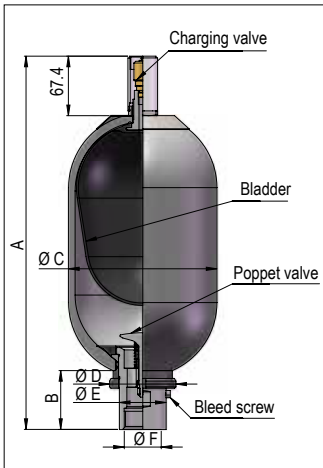
E/1: NBR (nitrile)

available on special order:

E/3: ECO (epichlorohydrine)

ABVE Characteristics, dimensions and accessories

CHARACTERISTICS AND DIMENSIONS



ABVE	LEDUC code	Nitrogen capacity Vo litres	Max. pressure (bar)	Weight (kg)	Dimensions (mm)					
					A	B	Ø C	D	E	Ø F
ABVE 4	066850	3.7	350	14	420	65	169	75	53	G1 1/4"
ABVE 10	066860	9.2	330	30	568	88	219	101	76	G 2"
ABVE 20	066870	17.8	330	50	888	88	219	101	76	G 2"
ABVE 32	066880	32	330	80	1380	88	219	101	76	G 2"
ABVE 50	066890	48.5	330	100	1885	88	219	101	76	G 2"

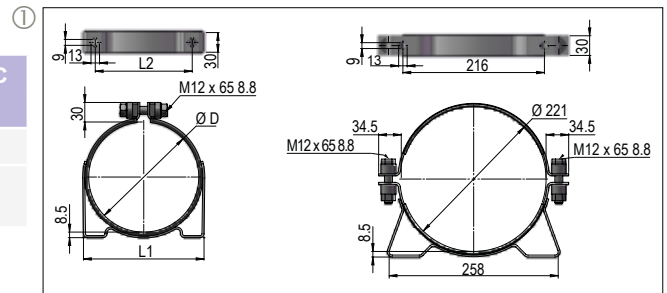
HYDRO LEDUC provides after sales service, supplies spare parts and can requalify your accumulators (retesting).

ACCESSORIES

► Fixation clamps ①

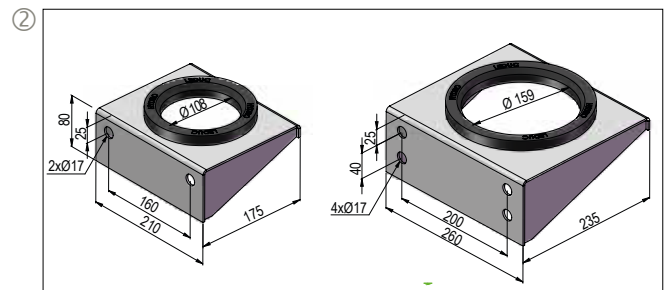


Volume (L)	Dimensions			Characteristics	LEDUC code
	Ø D	L1	L2		
4	168	184	148	Zinc-plated steel	254022
10 - 20 32 - 50	221	258	216	Zinc-plated steel	254007



► Fixation seats ②

Volume (L)	LEDUC code
4	254012
10 - 20 - 32 - 50	254008



► Adaptors ③

Volume (L)	Dimension		Characteristics	LEDUC code
	A	B		
4	G1 1/4"	G3/4"	Steel	066305
10 - 20 - 32 - 50	G2"	G3/4"	Steel	066074
10 - 20 - 32 - 50	G2"	G1"	Steel	066068
10 - 20 - 32 - 50	G2"	Full	Steel	066069

